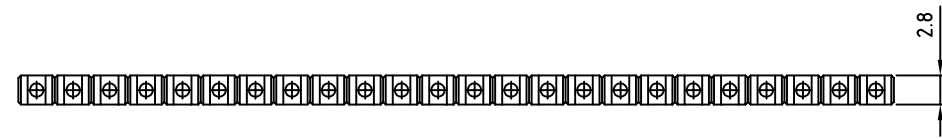


SIGN	DATE	DESCRIPTION	APPROVER
		Standard spec is changed	


THIS IS CAD DRAWING, DO NOT REVISE MANUALLY!!!



Material

- Solid PIN: Brass(CuZn)
- Surface of solder tail: Tin or Au plated.
- Insulator (housing): Thermoplastic (UL94V-0)

Electrical cULus

- Voltage rating: 300V
- Current rating: 10A
- Withstanding Voltage: 1.6KV
- Operating temperature: -30°C to +105°C
- Soldering temperature: 250°C±10°C/5 Sec
- Safety Approval: 

RoHS Compliant

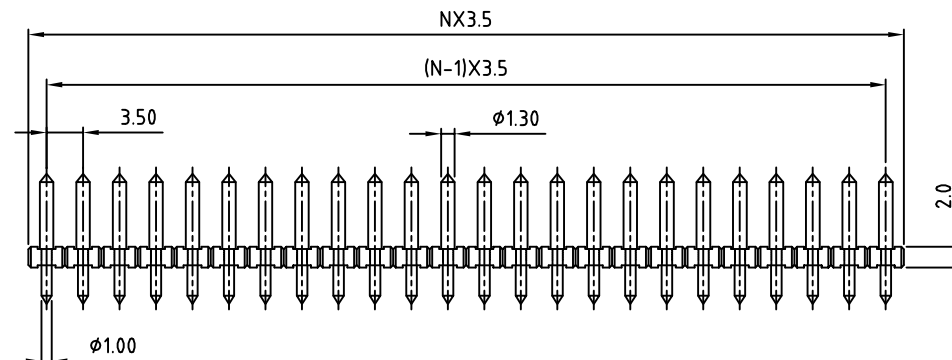
PART NUMBER:

OSTOPXX2200

No. of Poles

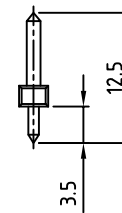
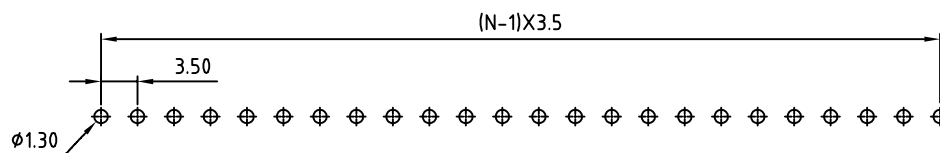
- 02: 2 Poles
- 03: 3 Poles

... ..
24: 24 Poles



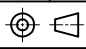
N = Number of contacts

P.C.B. LAYOUT



THESE DRAWINGS AND SPECIFICATIONS ARE THE PROPERTY OF ON-SHORE TECHNOLOGY, INC. AND SHALL NOT BE REPRODUCED, COPIED OR USED IN ANY MANNER WITHOUT THE PRIOR WRITTEN CONSENT OF ON-SHORE TECHNOLOGY, INC.

OST ON-SHORE TECHNOLOGY, INC.

TITLE		OSTOP-3.5mm series 2p-24p			
PART NO.	OSTOPXX2200	DWG NO.	OSTOPXX2200.DWG		
APPROVED	CHECKED	DESIGNED	DRAWN	CUST NO.	Tolerance
Shi Jun 2006.10.30	Marvin 2006.10.30	Marvin 2006.10.30	Marvin 2006.10.30		X. ±0.50
				UNIT: mm	X.X ±0.30
				SCALE: NONE	X.XX ±0.10
				SHEET: 01/01	X° ±1°
				REV: E	